



3.12

30T10-34 TYPE

Sequence, Internal Pilot and Drain

Maximum pressure (bar / psi) 207 / 3000
 Peak flow (L/min / gpm) 56.8 / 15 (See performance chart)

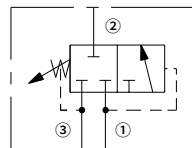
Features

- Adjustments cannot be backed out of the valve
- Adjustments prohibit springs from going solid
- Optional spring ranges to 117.2 bar (1700 psi)
- Industry common cavity
- Hardened parts for long life

Contents

Description	02
Operation	02
Ordering code	02
Materials	02
Technical data	03
Performance	03
Dimensions	04

Symbol



Description

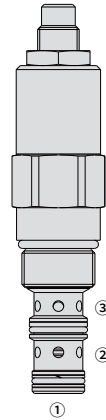
A screw-in, cartridge-style, direct-acting, spool-type, hydraulic sequence valve with internal pilot and spring chamber drain.

Operation

In its steady state, the 30T10-34 blocks flow from ① to ②, with the spring chamber drained at ③.

On attainment of a predetermined pressure at ①, the cartridge shifts to open ① to ②.

Note that back-pressure on ③ adds to the spring setting value.



*30T10-34A

Ordering Code

30T10-34 - - - /

Option:

1/4 in. Hex Allen Head A
 Factory Preset Non-Adjst. F
 Factory Preset
 Hidden Adjustment H

Cartridge Only

0

Seals:

Polyurethane (Std.) P
 Fluorocarbon V
 Buna N N

Adjustment Range:

6.9-48.3 bar 7
 (100-700 psi)
 20.7-117.2 bar 17
 (300-1700 psi)

Setting :

for Adjustable or
 Specify,

Blank

Setting in bar,
 for example:

25 bar M25
 100 bar M100

Setting in psi,
 for example:

900 psi 9
 1600 psi 16.0

Materials

Cartridge:

Weight: 0.26 kg; Steel with hardened work surfaces. Zinc-plated exposed surfaces; Polyurethane (Std.) seal.

Standard Ported Body:

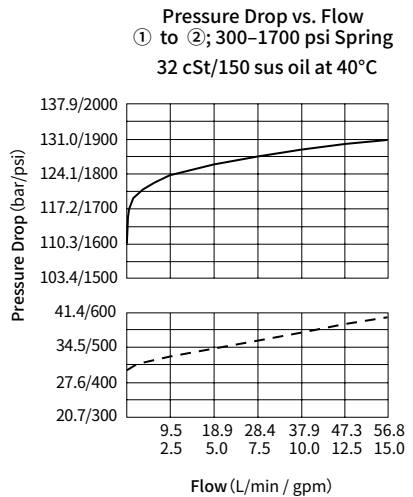
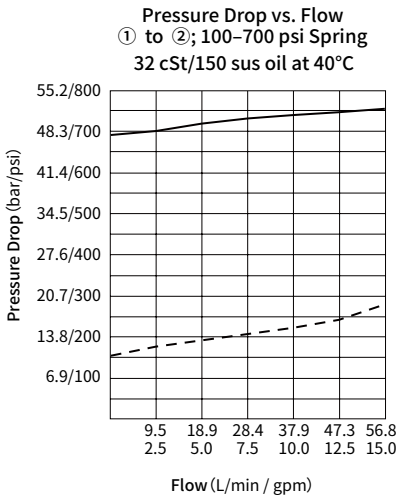
Anodized high-strength aluminum alloy, rated to 240 bar; Ductile iron and steel bodies available; Dimensions may differ, consult factory.

Technical Data

Max. pressure	207 bar (3000 psi)
Peak flow	See performance chart
Internal leakage	82 mL/min max. to 85% of nominal setting
Cavity	VC10-3 (See technical reference)
Fluid	Mineral-based or synthetics with lubricating properties
Viscosity range	7.4 to 420 mm ² /s
Temperature range	-54 to 107 °C (Polyurethane seals)
	-40 to 100 °C (Buna N seals)
	-26 to 204 °C (Fluorocarbon seals)
Degree of fluid contamination	The minimum pollution level is ISO4406 level 20/18/14, and level 17/15/13 is recommended to prolong the service life

03

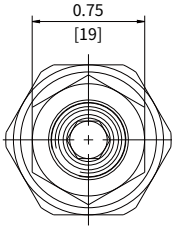
Performance (Cartridge Only)



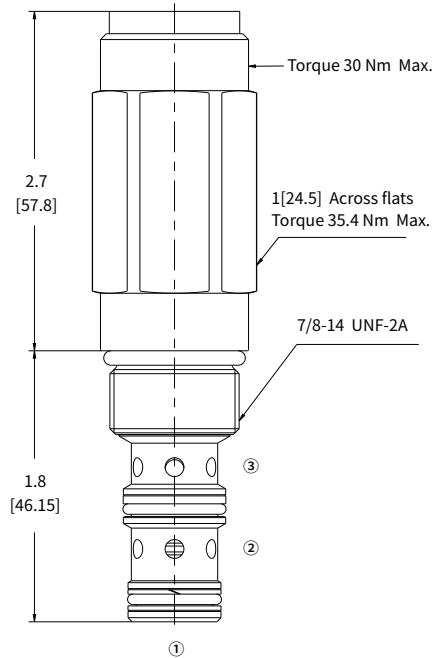
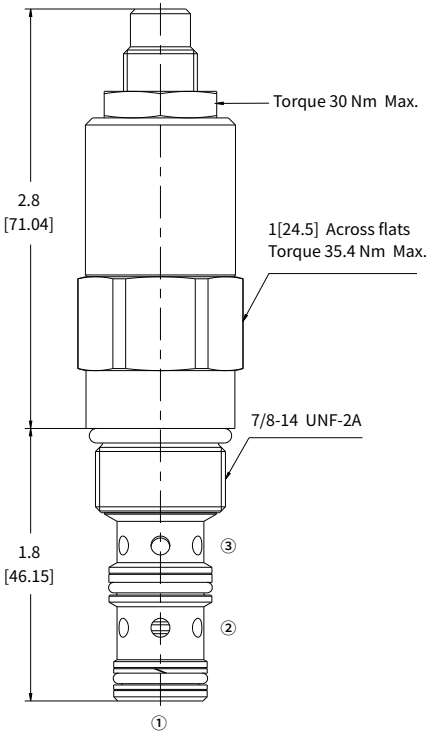
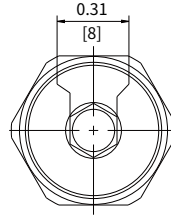
— Maximum Setting
 - - - Minimum Setting

Dimensions

Option "A"



Option "H"



INCH
MILLIMETER